

Buy compatible transceivers for this device at

 **Compufox.com**

 **MikroTik**

# netFiber 9

A remarkable outdoor switch for setting up an optical network that can even perform some light routing.  
The spiritual successor to the beloved FiberBox.



**MULTIPLE POWERING OPTIONS**



**DIFFERENT MOUNTING OPTIONS**



**STURDY OUTDOOR CASE**



**SFP**



**SFP+**



**GIGABIT ETHERNET**



**POE-IN**



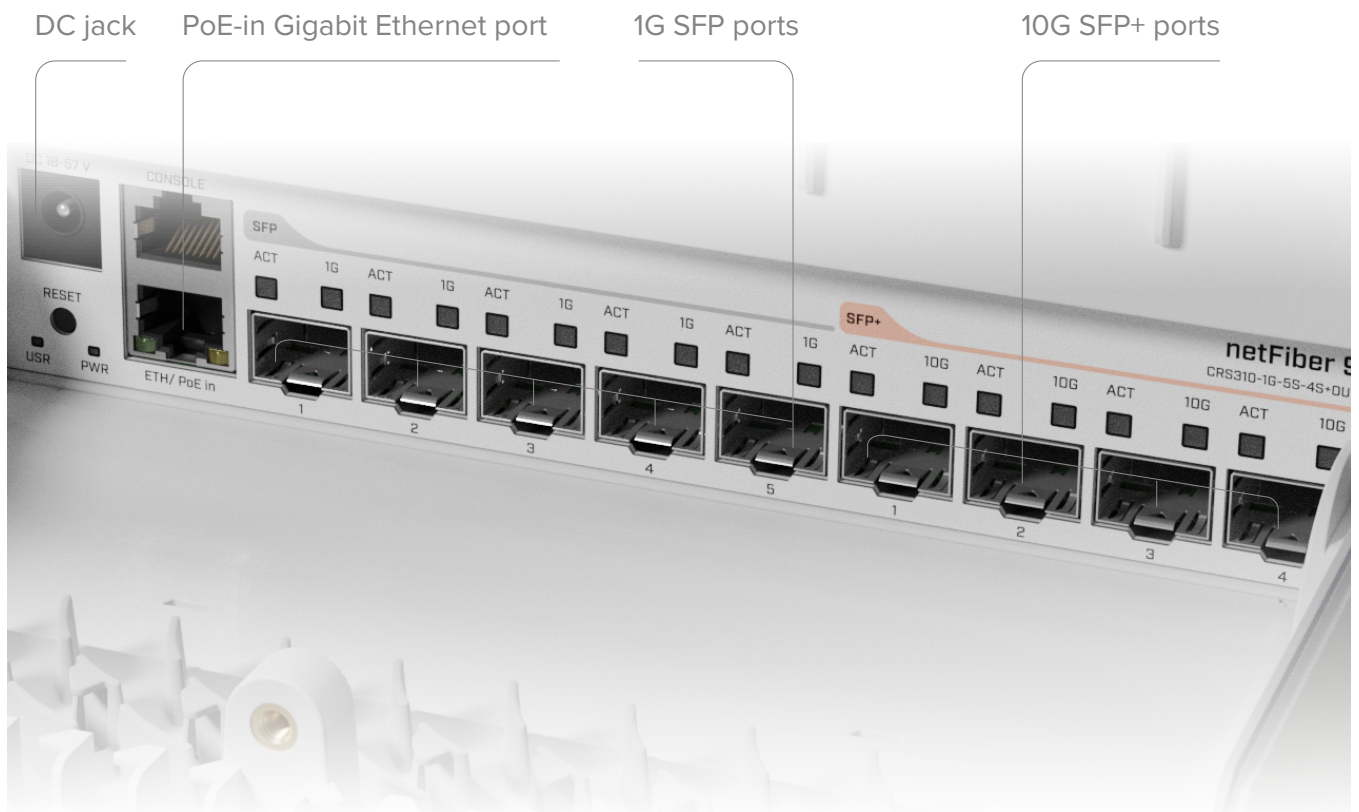
*Distance is not a problem with 10G optic connectivity!*

netFiber 9 is a powerful outdoor switch with SFP, SFP+, and Gigabit Ethernet. It features a powerful ARM v7 CPU, 256 MB of RAM, 4x 10G SFP+ ports, and an advanced Marvell switch-chip that can handle even the heaviest loads. The Gigabit Ethernet port is not just for management purposes.



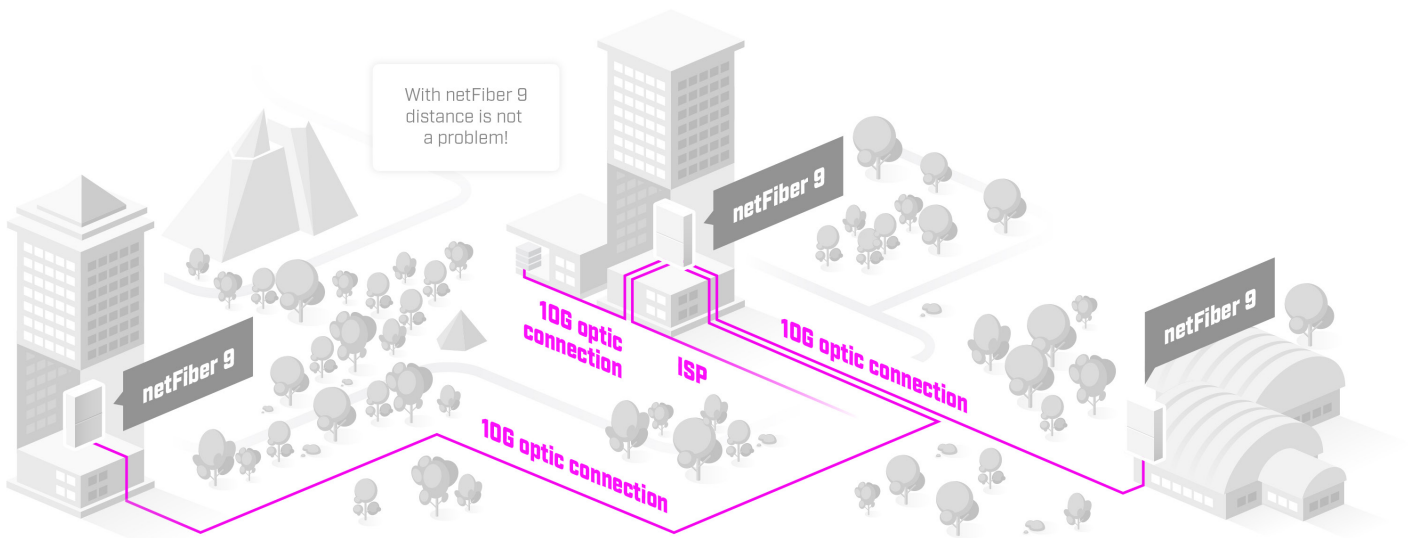
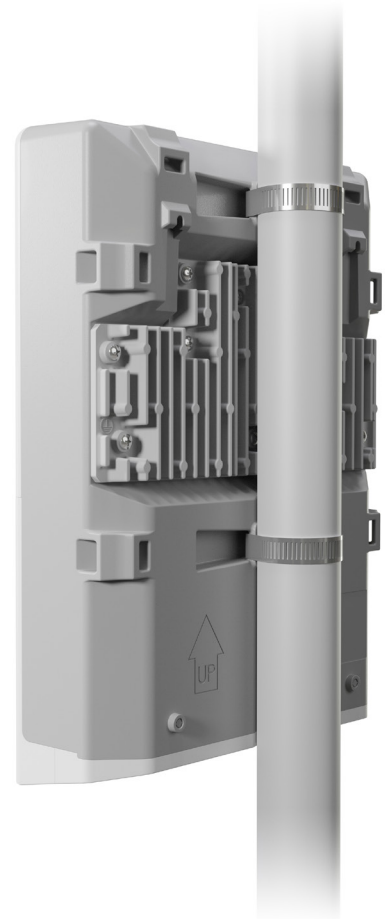
It has a direct connection to the switch chip – so you can enjoy full gigabit speed. This port also supports PoE-in, so you don't have to rely on the DC jack for powering in tight, hard-to-reach spots.

There is a console port, followed by five regular SFP ports and four SFP+ ports for that sweet 10 Gbps networking. This means there might be quite a lot of wires for you to organize at some point. That's why we designed the case to have some handy little additional features on the bottom of the case to help you keep everything neat and tidy.



The sturdy case provides decent protection in dusty environments with occasional splashes of water. Perfect for outdoors with some light coverage – like a roof overhang or a simple cabinet.

There is a massive heatsink on the back that serves two purposes. Not only it provides outstanding heat dissipation, it also moves the center of mass towards the side with all the mounting options – keeping the board firm and strong upon installation. The package includes metal hose clamps and screws, so you can attach the netFiber to a pole, wall, or mast right away.



netFiber 9 is an amazing tool for anyone working with connections over 100 meters while keeping data loss and ping low. Optic fiber can be a great alternative to copper if you are worried about electromagnetic interference or maybe even tampering and eavesdropping. With 10 ports, a powerful CPU, and a rugged case, netFiber 9 is a real bargain that will make your network management so much easier!

## Specifications

Product code	CRS310-1G-5S-4S+OUT
CPU	98DX226S 800 MHz
CPU core count	1
Size of RAM	256 MB
RAM type	DDR3
Number of 1G Ethernet ports	1
Number of 1G SFP ports	5
Number of 10G SFP+ ports	4
Operating system	RouterOS (License level 5)
Switch chip model	98DX226S
Dimensions	304 x 212 x 71 mm
Operating temperature	-40°C to +70°C tested

## Powering

PoE-in	802.3af/at
Number of DC inputs	2
Supported input voltage	18-57 V (PoE in) 18-57 V (DC jack)
Power adapter nominal voltage	48 V
Power adapter nominal current	0.95 A

## Certification & Approvals

Certification	CE, FCC, IC
---------------	-------------

## Included parts



48 V 0.95 A  
power adapter



Gigabit  
PoE injector



Hose  
clamp



Fastening  
set