

Buy compatible transceivers for this device at

 **Compufox.com**

MikroTik

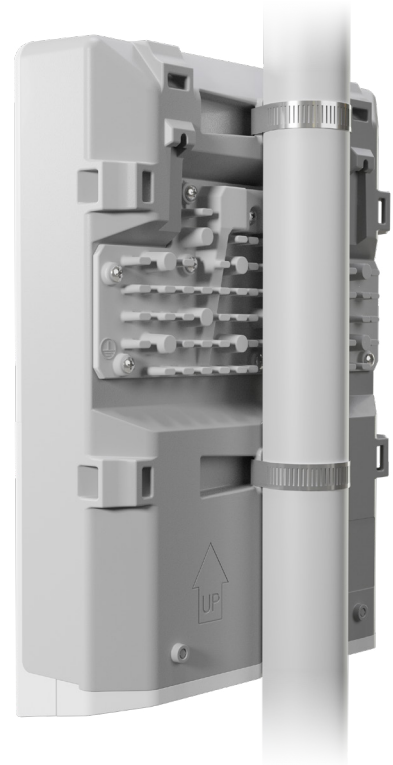


netPower 16P

An outdoor 18 port switch with 16 Gigabit PoE-out ports and 2 SFP+
Power all your access points anywhere!

Powering a bunch of access points or IP cameras and a few uplinks on a tower has never been easier. netPower 16P has 16 Gigabit Ethernet ports with PoE-out and two SFP+ ports for 10G fiber uplinks.

Its sturdy and compact outdoor enclosure allows the switch to be mounted in all kinds of environments – from damp attics and shafts to towers, masts and poles with hose clamps.



netPower 16P has a non-blocking throughput of 36 Gbps, switching capacity of 72 Gbps and forwarding rate of 53.6 Mpps.

netPower 16P – a simple solution for complicated tasks

When using both the high and low voltage adapters, the netPower will automatically choose the correct PoE standard and voltage, based on the devices you connect to each port. You can also specify it manually.

Compatible with MikroTik power supplies



24HPOW



48POW



48V2A96W

Specifications

Product code	CRS318-16P-2S+OUT
CPU	98DX226S, 800 MHz
CPU temperature monitor	Yes
Size of RAM	256 MB
Storage	16 MB flash
Switch chip model	98DX226S
Number of 1G Ethernet ports	16
Number of 10G SFP+ ports	2
Operating system	RouterOS (License level 5) / SwOS (dual boot)
Dimensions	303 x 212 x 78 mm
Operating temperature	-40°C to +70°C

Powering

PoE-out	Passive PoE with auto sensing, 802.3af/at
PoE-out ports	Ether1 - Ether16
Max PoE-out on low (< 30 V) voltage	5.6 A (2.8 A per 8port group, max 1.1 A per port)
Max PoE-out on high (> 30 V) voltage	2.8 A (1.4 A per 8port group, max 0.6 A per port)
Max total out (A)	The total output power limit will also depend on your power supply max current limit. You should not exceed your power supply current limit or the board may reboot
Number of DC jacks	2
Supported input voltage	18-30 V / 48- 57 V
Max power consumption	316 W
Max power consumption without attachments	16 W

Included parts



Hose clamp 1



Hose clamp 2



K-66 fastening set



2 DC to Terminal block adapters

* Power supply is NOT included with the product. You are welcome to use your preferred power option, like battery pack etc. Compatible also with MikroTik power supplies 24HPOW, 48POW and 48V2A96W

Switching test results

CRS318-16P-2S+OUT		RouterOS v6.45.7					
Mode	Configuration	1518 byte		512 byte		64 byte	
		kpps	Gbps	kpps	Gbps	kpps	Gbps
Switching	Non blocking Layer 2 throughput	2925,9	35532,1	8458,7	34646,8	53571,4	27428,6
Switching	Non blocking Layer 2 capacity	2926,9	71088,5	8459,7	69301,9	53572,4	54858,1
Switching	Non blocking Layer 1 throughput	2927,9	36000,0	8460,7	36000,0	53573,4	36000,0
Switching	Non blocking Layer 1 capacity	2928,9	72000,0	8461,7	72000,0	53574,4	72000,0

Like other CRS products, **CRS318-16P-2S+OUT** comes with a decent built-in CPU, that can utilize all RouterOS features, but with some performance restrictions (indicated in table below).

CPU Layer 3 performance results

CRS318-16P-2S+OUT		RouterOS v6.45.7					
Mode	Configuration	1518 byte		512 byte		64 byte	
		kpps	Mbps	kpps	Mbps	kpps	Mbps
Bridging	none (fast path)	104,1	1264,2	119,1	487,8	141,1	72,2
Bridging	25 bridge filter rules	59,7	725,0	59,7	244,5	70,4	36,0
Routing	none (fast path)	104,1	1264,2	129,7	531,3	143,5	73,5
Routing	25 simple queues	56,7	688,6	57,9	237,2	65,2	33,4
Routing	25 ip filter rules	44,1	535,6	45,6	186,8	48,4	24,8